

As a House of Prayer, House of Study, and House of Assembly since 1947, Temple Beth Sholom of Hamden (TBS) has become a vital part of a caring community.

Our Congregation identifies with and enjoys Jewish life and its home, and seeks to insure that the doors of our synagogue will remain open into the distant future by preserving and advancing the religious traditions of our Jewish heritage.

An Endowment Fund is one way you can provide financial support so that TBS can continue to support and expand its role. Thus, the mission of the TBS Endowment Fund is to furnish our synagogue with a perpetual source of income from investments, with only limited use of principal. Efforts are made to achieve this goal through ongoing contributions and capital growth.

Donations to the Temple's Endowment Fund can provide a lasting memorial for you and your loved ones, and also a reliable source of income. In this way, you honor the past and present by expressing faith in the future of our Temple and our people.

The Endowment Fund is administered by an independent Endowment Committee which is composed of elected Trustees and appointed members of the Congregation.

CHARITABLE ENDOWMENT GIFTS

You can establish a named endowment fund with a minimum charitable gift or pledge of \$1,000. Donors of \$10,000 or more will be recognized as Benefactors.

The amount of your charitable gift or pledge is payable by you in full as follows: the greater of \$1,000 or one-third thereof when your named endowment fund is created; and the balance in two equal installments due by June 30 of the next two years. Additional contributions by you or others in any amount can also be made to your named endowment fund.

In setting up your endowment fund, you may appropriately commemorate various family occasions, special events, or milestones. However, restricted or special purpose endowment funds may be established only with the approval of the Endowment Committee.

If you do not wish to establish your own named endowment fund, donations may be made in any amount to the TBS General Endowment Fund or to another existing fund.

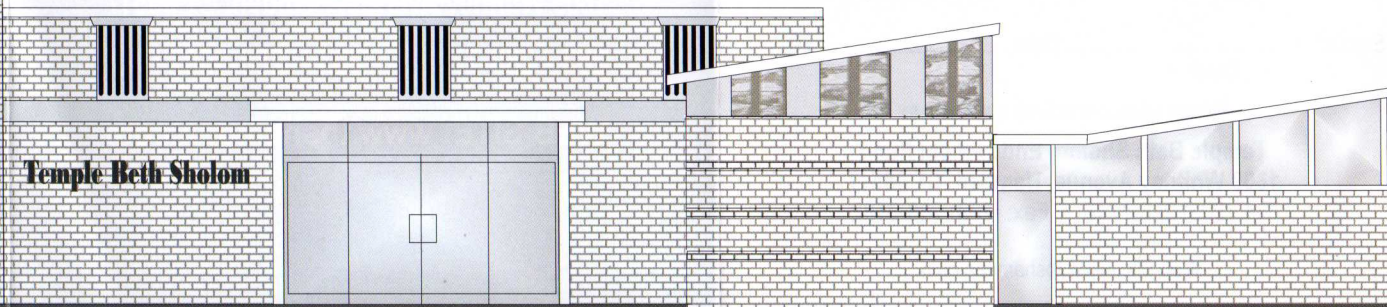
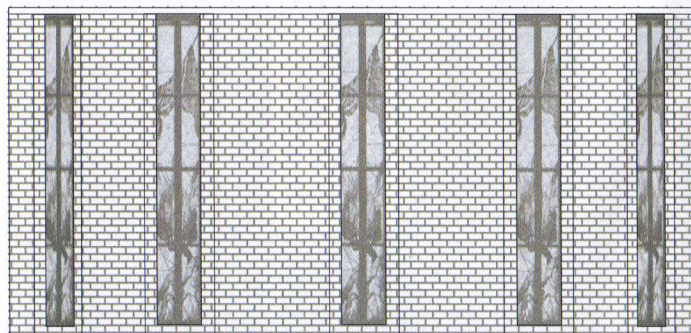
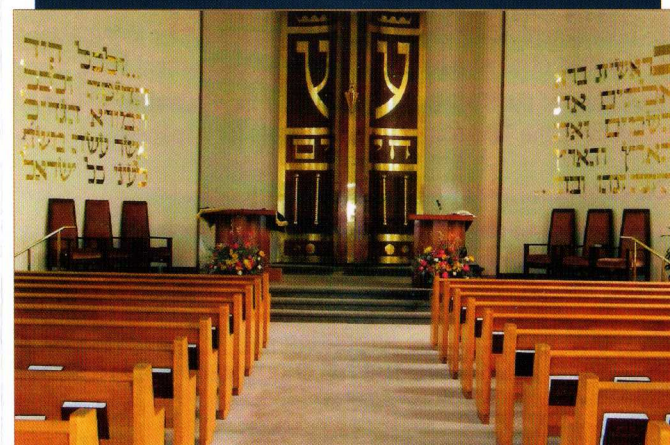
Your charitable gift to TBS is tax-deductible as provided by law.

**Caring today . . .
... to prepare for tomorrow.**

SOME METHODS OF GIVING TO THE TBS ENDOWMENT FUND

- By a gift or pledge of cash, securities or other property.
- By a bequest in a Will or Trust.
- By transferring life insurance.
- By naming TBS a beneficiary of an IRA, retirement fund, or life insurance.
- By a gift annuity.

Members of the Endowment Committee are available to discuss various types of gifts with a donor and/or with the donor's financial consultant.



The Temple Beth Sholom Endowment Fund

I/We as Donor(s), hereby pledge to make a charitable gift to Temple Beth Sholom of \$, and enclose herewith \$ as full (partial) payment. I/We will satisfy and fulfill this pledge by the following method or manner:

.....
This gift is to establish the following TBS named endowment fund:

.....
or is an addition to the following existing TBS endowment fund:

SPECIAL INSTRUCTIONS/PURPOSE

I/We understand and agree that:

1. I/We are responsible for payment of the full amount of this pledge. I/We agree to pay any unpaid balance in two equal annual installments by June 30 of the next two years.
2. Endowment Committee approval is required prior to the establishment of either a named or restricted Endowment Fund.
3. A copy of the TBS Bylaws relating to the Endowment Fund is on file in the TBS office, and is available for inspection.

Donor(s)

Address

Phone No. E-Mail

I/WE HAVE READ THE TBS BROCHURE AND ACCEPT THE ABOVE PROVISIONS RELATING TO THE TBS ENDOWMENT FUND.

Signed Date, 20....
Donor

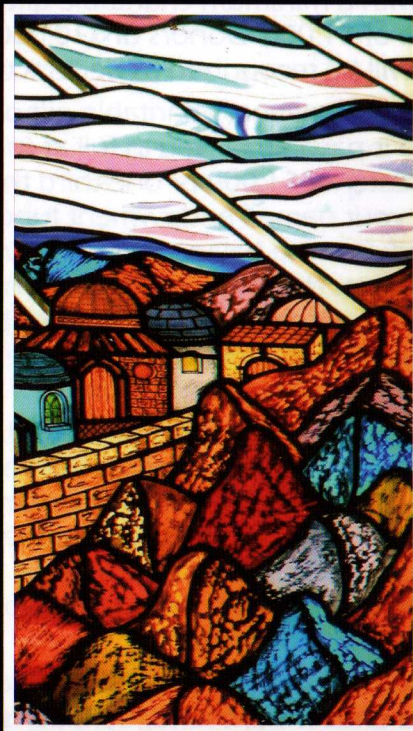
Signed Date, 20....
Donor

Please contact or submit questions to:

Temple Beth Sholom Endowment Fund
1809 Whitney Avenue, Hamden, CT 06517
Tel. (203) 288-7748 • Fax: (203) 288-0582

Web Site: www.tbshamden.com

"You shall make Me a sanctuary and I will dwell among them!"
... Terumah, Exodus 25.8



Please contact or submit questions to:

The Temple Beth Sholom Endowment Fund

1809 Whitney Avenue, Hamden, CT 06517

203 • 288-7748 203 • 288-0582 FAX

WEB SITE: www.tbshamden.com

Caring today to prepare for tomorrow.

*"I did not find the world desolate when I entered it;
those who came before planted for me before I was born;
so do I plant for those who will come after me."
... Talmud, Ta'amit 23a*

Temple Beth Sholom

HAMDEN, CONNECTICUT

